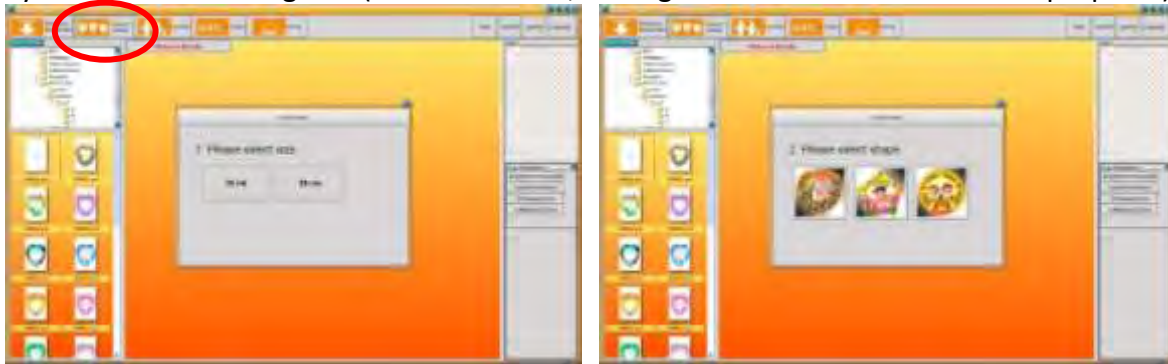


# PrintMe-Balloons!™ Software Operation

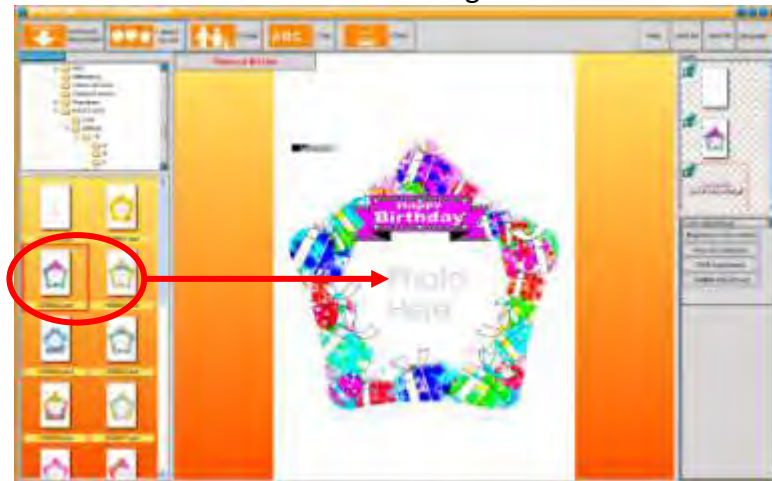
Windows Version

## 1. Select Border Size & Shape:

Click **Select Border**, then select the size and shape of the balloon. To create your balloon without borders, select any border to use as a guide (the first border, ending in "000" is intended for this purpose.)



Select the border you prefer and then double-click it or drag it to the center of the screen.



## 2. Insert Photo: (JPG, GIF, BMP, PCX & TIFF Files are supported)

Click **Photo** to select photos from your files. Use the Folder Menu to navigate to your artwork. Click the photo twice or drag it to the center of the screen. Drag the photo to adjust the size of it. Your mouse wheel can be used to zoom in and out.



### 3. Edit Text:

Click **Text**. The Border will have a Text Layer already applied. To remove this from your print, simply double-click the Layer to hide it. This works with any of the Layers.

Enter the text, font, color and effects then select **OK/Confirm**. The font, color and effects can be changed by first highlighting the text box, making the necessary changes and then selecting **OK/Confirm**. Two Text Boxes can be created by deselecting the first box and then adding the second.



### Color Adjustments:

Brightness and Contrast, Hue and Saturation, RGB or GAMMA adjustments can be made using this tool.



#### 4. **Print:**

Click **Print**. We recommend you print your design on plain copy paper first, lay it over the balloon blank and hold it up to the light to insure the design is in the proper position. X and Y Axis displacements in the software can be used to adjust the print so that all color bleeds over the balloon perforations.

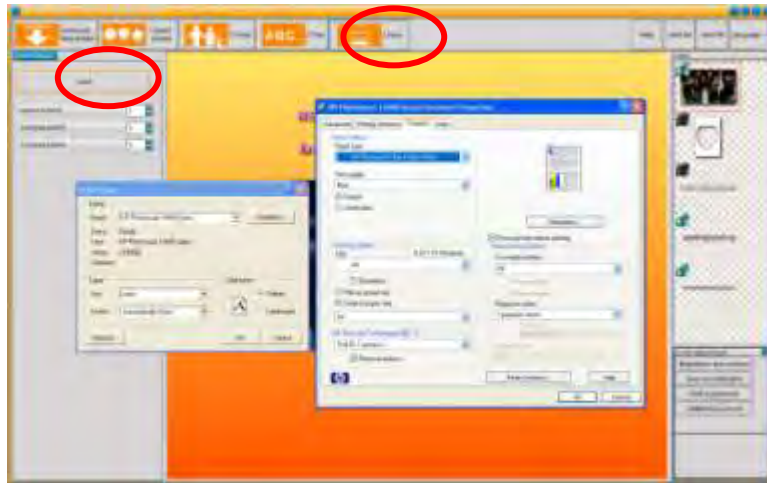
Not all printers have been tested, however some basic rules apply:

Choose the **Paper Size** of A4 for small balloon or Super B (which is 13 x 19") for the large balloon

Select **No Scaling** in your driver preferences.

Choose a **Thick Paper** type with a **Matte** finish.

Select **Best Color**



#### **PrintMe-Balloons!™ Assembly:**

Carefully tear out the balloon along the dotted lines.

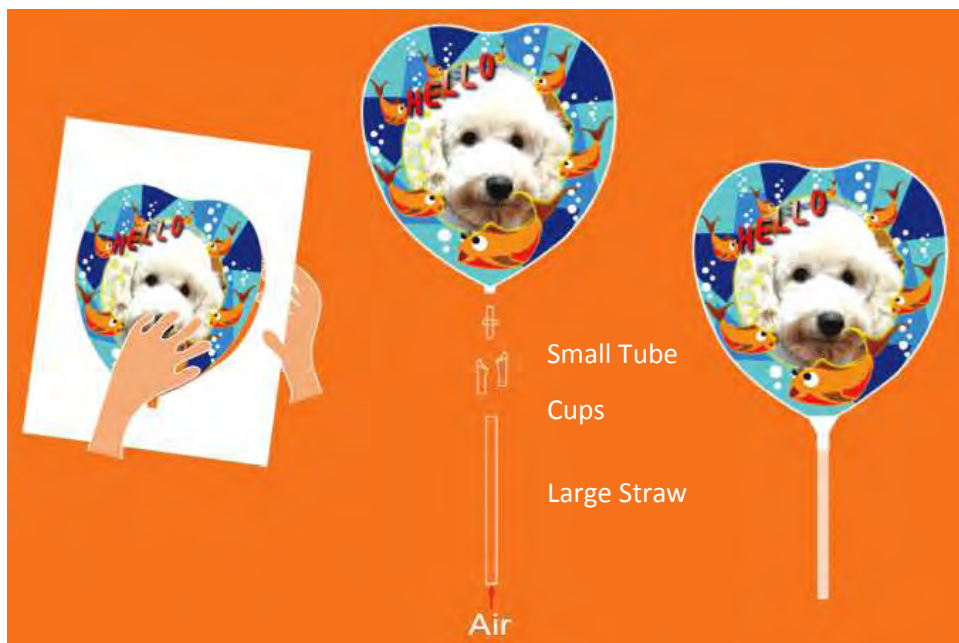
Insert the small tube into the balloon (long end first) so the paper is flush with the tube end.

Place the two plastic "cups" around the inserted tube, so that the notches line up with the tube's.

Insert the long straw over the "cups", making sure it is a clean fit.

Blow up the balloon using the open end of the long straw. Air may be added later, if needed.

If using the optional balloon base, insert it now.



If you have any questions or problems, please contact your vendor for further assistance.