

Flock Iron-On Transfer Instructions

Important: Before applying flock transfers we highly recommend you test a small hidden area (if possible) first with your iron or heat press to ensure your garment/fabric will withstand heat without melting or scorching. See right side for time & temperature specifications.

Tip: Following instructions will ensure excellent results!

Options for applying flock designs:

• Solid designs/letters

Can be peeled and placed on shirt/item (flock side up)

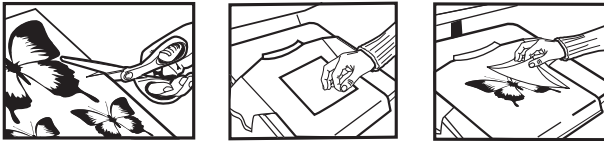


• Multi-part designs/letters (method intended only to keep separate parts in place)

Should be cut out, and placed on shirt/item adhesive side down (paper side up).

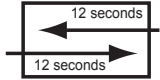


(ie: letters like these must be cut)



Applying Flock Transfers

1. If using a **Home Iron**, preheat iron between Wool & Cotton setting.
2. Always iron on hard flat protected surface. (ie: ironing board or counter top using a towel to protect surface)
3. Do not use steam.
4. Position the transfer on shirt/item, adhesive side down.
5. Using firm pressure on the iron, press the transfer for 12 to 15 seconds. (Transfers larger than iron require iron **lift and replacement**. Repeat pressing process until all areas are transferred.)
6. Allow transfer to cool then peel off paper backing if applicable.
7. On thicker garments such as heavy nylon or canvas turn garment inside out and slowly iron transfer area in 12 second passes.



1. Preheat the **Heat Transfer Machine** to 325-350 degrees.
2. Adjust machine for medium pressure (ie: handle to snap closed firmly).
3. Position the transfer on shirt/item, adhesive side down.
4. Press the transfer for 12 to 15 seconds.
5. Allow the transfer to cool slightly, peel off the paper backing if applicable.
6. On thicker garments such as heavy nylon or canvas turn garment inside out and press transfer area for 12 to 15 seconds.



Garment Washing Instructions: Avoid Bleach. Machine wash, cold water only.

Need Help? Visit www.bestblanks.com/flockhelp.html